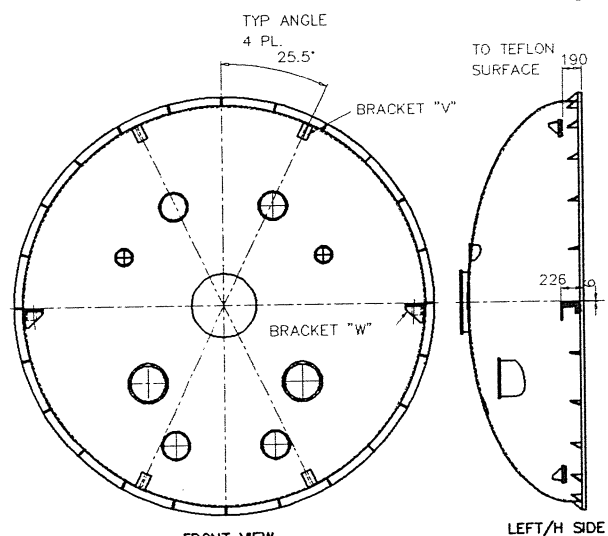
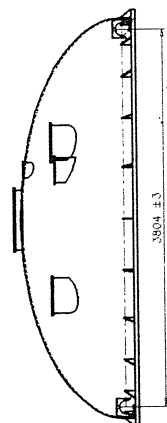
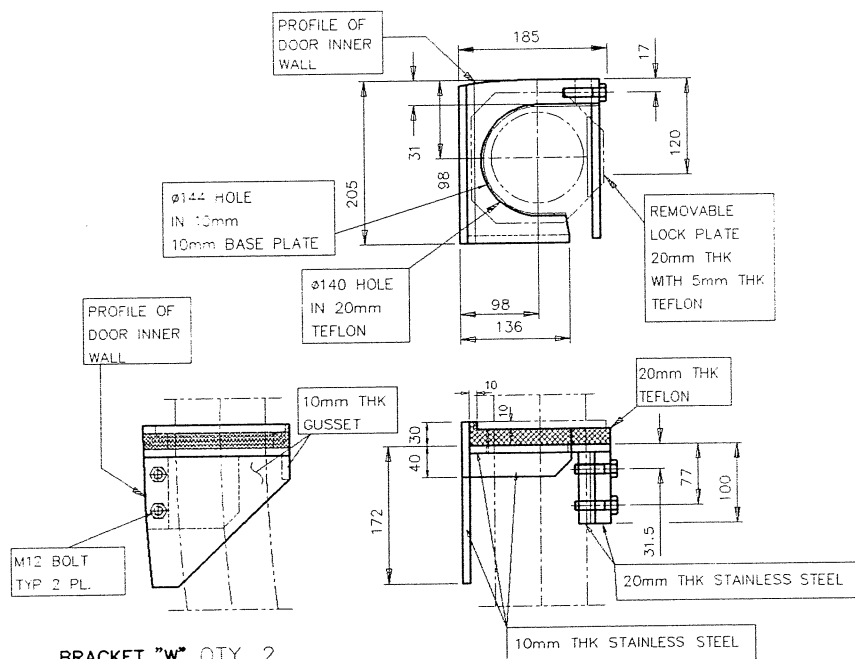


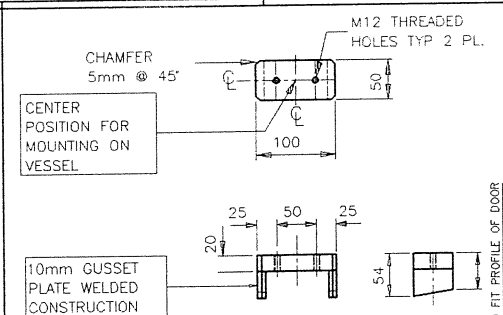
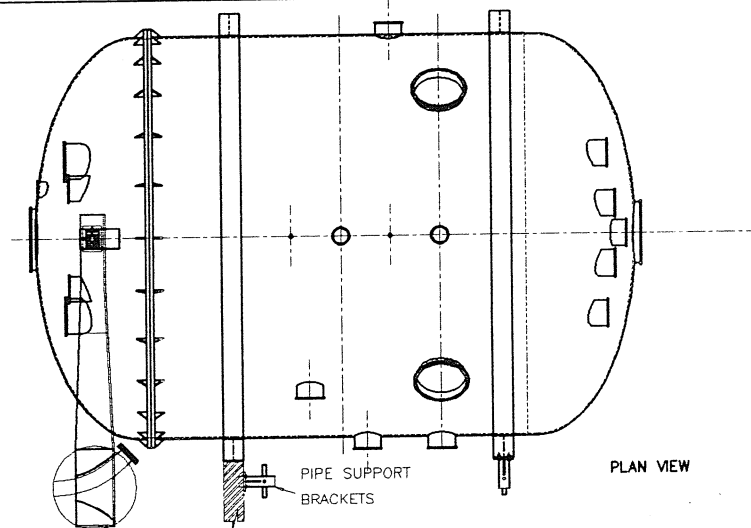
TEST/DRAWING STATUS:	ACTIVE:	SIGN:	DATE:
INFORMATION ONLY			
FOR 3rd PARTY APPROVAL			
PERMIT MATERIAL ORDER			
FOR MANUFACTURE			
AS BUILT			
SUPERSEDED			



DOOR INNER BRACKETS

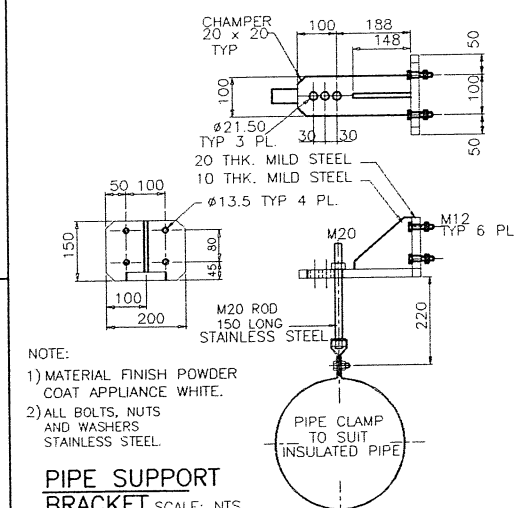


BRACKET "W" QTY. 2



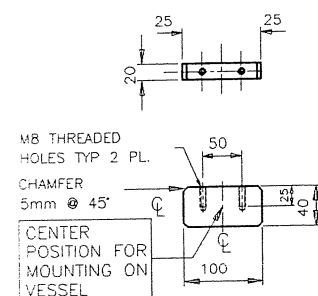
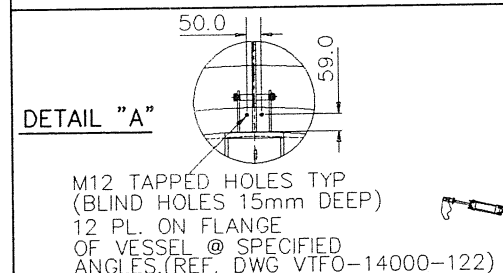
MOUNTING PLATE "Z"

STAINLESS STEEL FLAT BAR
50 x 20
SCALE: NTS. QTY 10



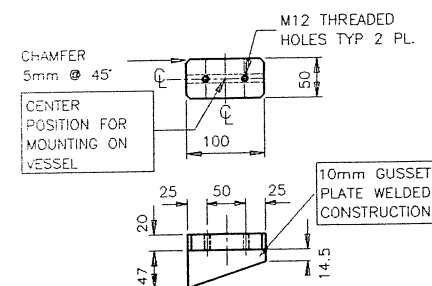
PIPE SUPPORT
BRACKET SCALE: N

QTY 4



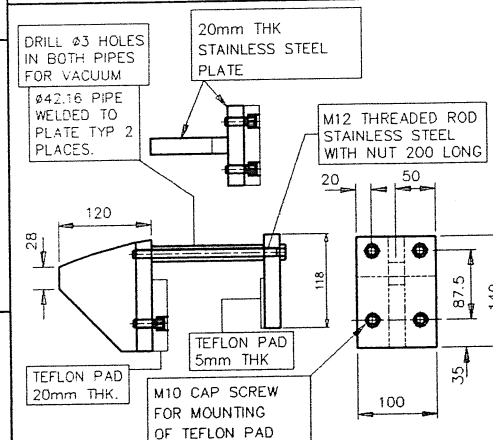
MOUNTING PLATE "X"

STAINLESS STEEL FLAT BA
40 x 20
SCALE: NTS. QTY 32

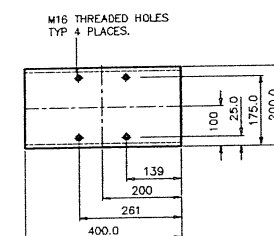


MOUNTING PLATE "Y"

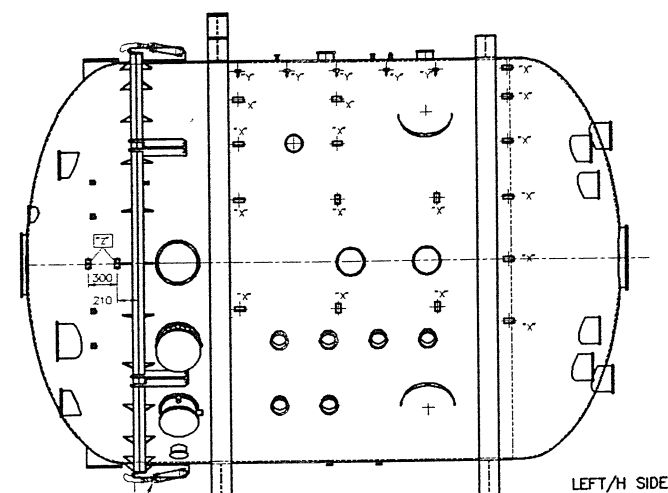
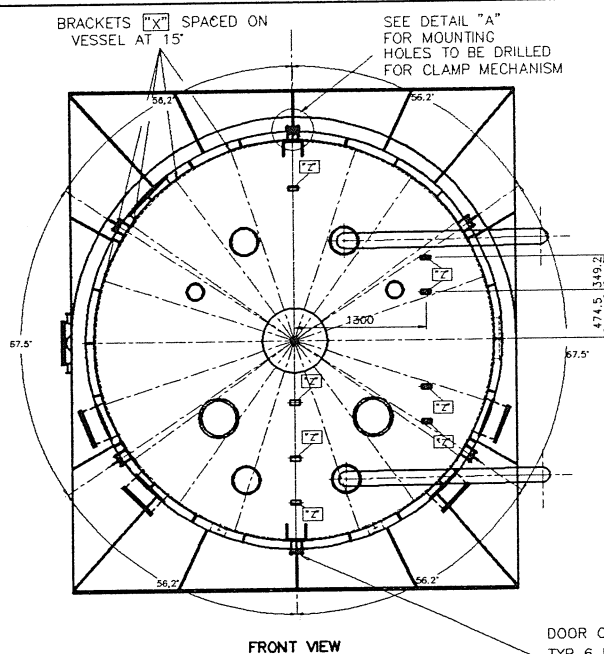
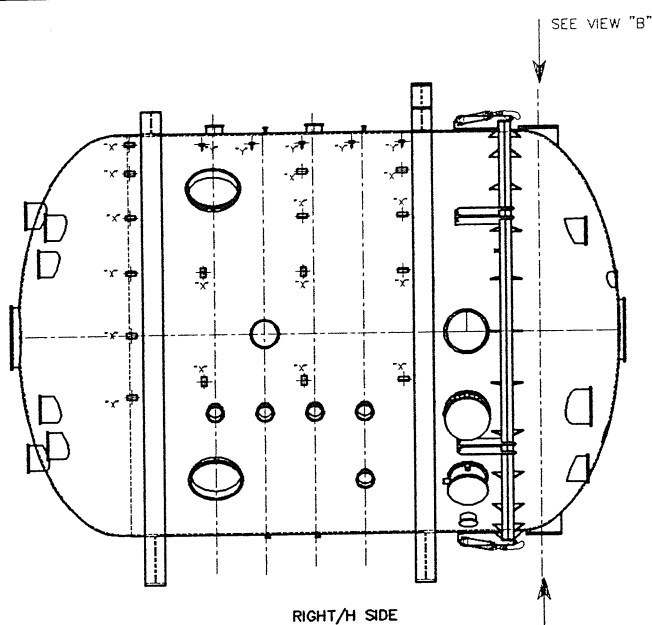
STAINLESS STEEL FLAT BAR
50 x 20
SCALE: NTS. QTY 10



BRACKET "V" QTY: 4




DETAIL "B" & "C" (TOP AND BOTTOM)



LEFT/H SIDE

DOOR CLAMP MECHANISM
 TYP 6 PL.
 FOR CLAMP MECHANISM
 REFER TO DWG. VTFO-047

												TITLE : VESSEL SMALL SUPPORTS					
										TO SABS 0111		ISSUE A B C D E F G H I J K L M N O P Q R S T U V W X Y Z					
UPDATED BRACKETS QTY. AND MOD. BRACKET "X"										B -- ID		GOL 92-5-14		DISC NO/FILE NAME		SHT 1 OF 1	
										GOL 92-9-3		VIT0B015		SCALE : 1:25		WHEN PLATED OR UNLESS OTHERWISE STATED	
REVISION DETAILS										ASS C/NOTE DRAWN CHECK APPR		P.O.F. DATE		VIT0B015		AD	